



ICEO926 ON B42

## Features

- Space-saving 22" (558 mm) wide design.
- Low profile design for difficult-to-fit applications.
- Produces up to 930 lbs (422 kg) of ice per day.
- *Harvest Assist* provides consistent ice production for the life of the ice maker while reducing energy consumption and increasing capacity.
- *Pure Ice*® exclusively by Ice-O-Matic. Built-in antimicrobial protection for the life of the ice maker inhibits bacteria growth on ice maker surfaces. Ice-O-Matic's optional water filtration system provides protection against unpleasant tastes, odors and scale formation.
- Durable, electroless nickel plating on all evaporator plates ensures reliability.
- *Longest optional warranty in the industry.* Purchase an Ice-O-Matic water filter with your cube ice maker, replace the filter every six months, and the evaporator warranty is extended to 7 years parts and labor (available in the U.S. and Canada only).
- ENERGY STAR® rated.

## Options

WATER FILTERS			
Ice Machine Model	Manifold		Inline
	System	Replacement	System
ICEO926	IFQI	IOMQ (I)	N/A

## Ice Maker Warranty

Every Ice-O-Matic ice maker is backed by a warranty that provides both parts and labor coverage.

- Three years **Parts** and **Labor**.
- Five years **Parts** coverage on the evaporator and compressor.
- Seven years **Parts** and **Labor** on the evaporator when you purchase an Ice-O-Matic water filter with your cube ice maker and replace the filter every six months (available in the U.S. and Canada only).

## Ice Form



### CUBE

FULL CUBE DIMENSIONS	
W x D x H (in.)	7 <sup>5</sup> / <sub>8</sub> x 7 <sup>5</sup> / <sub>8</sub> x 7 <sup>5</sup> / <sub>8</sub>
W x D x H (mm)	22 x 22 x 22
HALF CUBE DIMENSIONS	
W x D x H (in.)	3 <sup>5</sup> / <sub>8</sub> x 7 <sup>5</sup> / <sub>8</sub> x 7 <sup>5</sup> / <sub>8</sub>
W x D x H (mm)	10 x 22 x 22

## Bin Chart Kits for Combining Wider Bins with Smaller Models

ICE STORAGE BINS												
Kits	Model No.	B25	B40	B42	B55	B70-30	B90-30	B100	B120	B130	B150	B170
		Capacity	242 lbs (110 kg)	344 lbs (156 kg)	351 lbs (160 kg)	510 lbs (232 kg)	741 lbs (337 kg)	1023 lbs (465 kg)	854 lbs (388 kg)	1142 lbs (519 kg)	1457 lbs (661 kg)	1447 lbs (658 kg)
	Width	30 in (762 mm)	30 in (762 mm)	22 in (559 mm)	30 in (762 mm)	30" (762 mm)	30" (762 mm)	48 in (1219 mm)	48 in (1219 mm)	48 in (1219 mm)	60 in (1524 mm)	60 in (1524 mm)
ICEO926		KBT19	KBT19	Kit Not Required	KBT19	KBT19	KBT19	KBT222*	Kit Not Required**	Kit Not Required**	Kit Not Required**	Kit Not Required**

See Ice-O-Matic Price List for Adapter Kits to combine ice makers with most available ice/beverage dispensers.

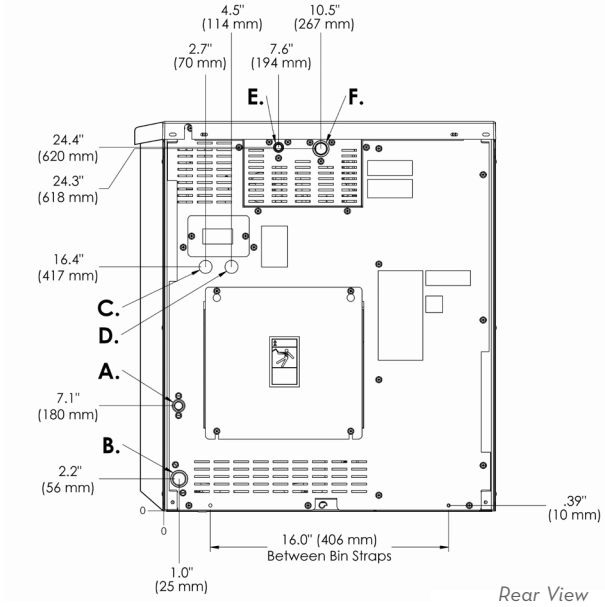
\*KBT222 only for dual iceheads.

\*\*No charge for Side by Side tops when ordered at time of purchase. Additional charges apply when ordered separately.





ICEO926 CUBE ICE MAKER



### Remote Cooled

- A. Ice maker potable water in, 3/8" FPT.
- B. Ice maker water out, 3/4" FPT.
- C. Hole for electrical connections, 7/8".
- D. Hole for remote electrical connection, 7/8".
- E. Liquid line, 3/8" male quick connect coupling for precharged line set.
- F. Discharge line, 1/2" male quick connect coupling for precharged line set.

### Operating Requirements

	MINIMUM	MAXIMUM
		<b>60 Hz</b>
Ambient Temp. Range Air	50°F (10°C)	100°F (38°C)
Water Temp.	40°F (4.4°C)	
Water Pressure	20 PSIG (1.4 BAR)	60 PSIG (4.1 BAR)

### Dimensions

ALL MODELS	
W x D x H (in.)	22.3 x 24.25 x 26.06
W x D x H (mm)	566 x 616 x 662

### Specifications

Model Number	Cond. Unit	Ice Production per 24hrs		Water Usage gallons per 100 lbs of Ice 90°F air/70°F water		kWH Used per 100 lbs of ice @ 90°F air/70°F water	Voltage Characteristics	Min. Circuit Ampacity	Fuse Size	Approx. BTUs per hour**
		70°F air/50°F water lbs (kg)	90°F air/70°F water lbs (kg)	Potable	Condenser					
ICEO926R★	Remote*	930 (422)	780 (354)	20.0	-	5.1	208-230/60/1	16.2	20	17,200**

#### NOTES:

Number of Wires: 3 (including ground)  
 Approx. Shipping Weight lbs (kg): ICEO926: 215 (98)  
 Refrigerant Type: R404A

\*Requires Remote VRC2061 condenser and precharged line set.  
 \*\*BTUH is calculated 0°F Evaporator, 100°F Condensing, and 33 PSIG.

★ENERGY STAR qualified machine. Please see our website [www.iceomatic.com](http://www.iceomatic.com) for the latest list of ENERGY STAR qualified machines and available rebates

### Accessories

Model Number	Description
VRC2061B	Remote condenser
KIBDO1	Ice Level Kit for Coke® Freestyle
RT325 404	25 ft. Precharged Tubing Kit for units using R-404A refrigerant
RT340 404	40 ft. Precharged Tubing Kit for units using R-404A refrigerant
RT360 404	60 ft. Precharged Tubing Kit for units using R-404A refrigerant
RT375 404	75 ft. Precharged Tubing Kit for units using R-404A refrigerant